



OPERATING INSTRUCTIONS

efuturo charging cable Mode 3

EN/MLI/AAI/12-11-2020

Dear customer!

General

These instructions will help you to take the device into operation and to operate it without malfunction or risk.



Read the manual before you take the device into operation.

This manual will help you to:

- avert dangers
- familiarise yourself with the device
- achieve optimum function
- identify and remedy defects in good time
- avoid malfunctions due to improper installation
- prevent repair costs and downtimes
- increase the reliability and lifetime of the device
- prevent risks to the environment

The manual is an important part of the product and must be kept for future reference.

efuturo GmbH does not accept liability for damage caused by failure to observe the instructions in this manual.

Intended use

ⓘ **Testing:** If in doubt, have the charging cable checked for suitability by a qualified electrician.

With our MODE 3 charging cables, you can charge your electric or hybrid vehicle at a suitable charging infrastructure.

The manual is an important part of the product and must be kept for future reference.

efuturo GmbH does not accept liability for damage caused by failure to observe the instructions in this manual.

Any other use is not permitted and is therefore contrary to the intended use. The charging cable is only safe if this operator's manual and the documentation for the vehicle are observed.

- Before using the charging cable, read this operator's manual and the documentation for your vehicle
- Non-observance of the instructions in this operator's manual can lead to personal injury or damage to property, such as electric shock, short circuit or fire



OPERATING INSTRUCTIONS

efuturo charging cable Mode 3



Use contrary to the intended use



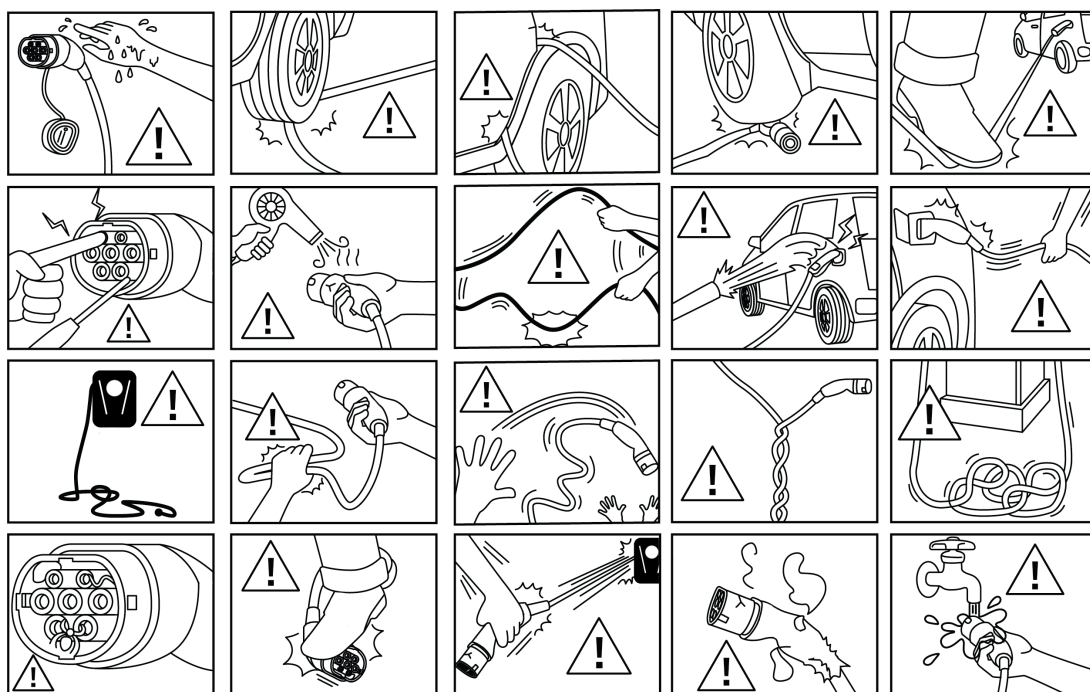
This is a Mode 3 charging cable that is only suitable for electric vehicles with a Type 1/Type 2 socket. Do not use it for electric vehicles with sockets of other types.

Use contrary to the intended use increases the risk of personal injury and damage to property. The following in particular are prohibited:

- Changing or manipulating the charging cable
- Connecting the charging cable to a faulty or unsuitable charging infrastructure, e.g. one that is not designed for a corresponding continuous load
- Using a defective charging cable

The user is responsible for all personal injury and damage to property resulting from use contrary to the intended use. efuturo GmbH does not accept liability for operating errors and damage resulting from use contrary to the intended use.

Basic safety instructions



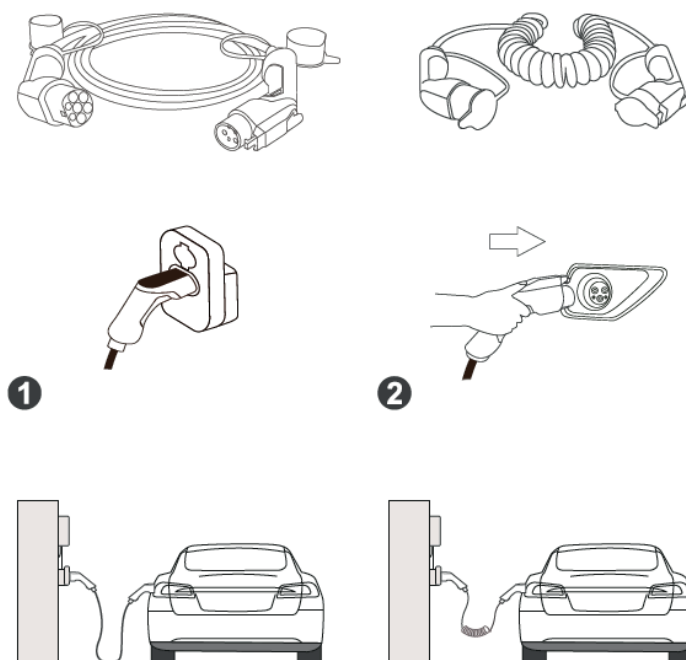
- ⚠ Do not drive over the plug
- ⚠ Do not drive over the charging cable
- ⚠ Do not squash the charging cable
- ⚠ Only pull the charging cable out of the charging socket directly at the plug
- ⚠ Do not heat the plug and cable
- ⚠ Do not kink the cable
- ⚠ Do not twist the cable
- ⚠ Keep children away from the charging cable
- ⚠ Keep animals away from the charging cable
- ⚠ Do not use adapter plugs or extension cables
- ⚠ Connect the charging cable to a suitable charging infrastructure that does not have any defects
- ⚠ Protect plug connections and plug-and-socket devices against moisture and liquids
- ⚠ Do not use the charging cable in potentially explosive environments containing flammable liquids, gases or dust



Model	3,7 kW	7,4 kW	11 kW	22 kW
Connector on vehicle side	Type 1/2	Type 1/2	Type 2	Type 2
Charging mode	Mode 3	Mode 3	Mode 3	Mode 3
Protection class	IP 44 (with protective cap)	IP 44 (with protective cap)	IP 44 (with protective cap)	IP 44 (with protective cap)
Working temperature	-25 °C to +50°C	-25°C up to +50°C	-25°C up to +50°C	-25°C up to +50°C
Cable shape	spiral	spiral / straight	spiral / straight	spiral / straight
Cable	3 G 2.5 + 0.5	3 G 6.0 + 0.5	5 G 2.5 + 0.5	5 G 6.0 + 0.5
Certification	TÜV, CE, RoHS	TÜV, CE, RoHS	TÜV, CE, RoHS	TÜV, CE, RoHS
Charging capacity	up to 3.7 kW	up to 7.4 kW	up to 11 kW	up to 22 kW
Nominal voltage	230 V	230 V	400 V	400 V
Nominal frequency	50 Hz	50 Hz	50 Hz	50 Hz
Rated current	16 A	32 A	16 A	32 A
Overheating protection	yes	yes	yes	yes

 DAMAGED CHARGING CABLE – FATAL SHOCK HAZARD

- Check the charging cable for damage (e.g. cracks) before each use
- Do not use a damaged charging cable



- Uncoil charging cable
- Remove protective cap from the plug on the vehicle and infrastructure sides
- Plug in type 1 or type 2 plug on vehicle and infrastructure sides
- Start charging process on the vehicle

- As soon as the vehicle is charged, end the charging process
- Ending the charging process on the vehicle
- Unplug type 1 or type 2 plug on vehicle and infrastructure sides
- Connect protective cap on the plug on the vehicle and infrastructure sides
- Coil up the charging cable without kinks
- Stow the charging cable properly in the vehicle

During normal use, you will generally carry the charging cable with you in the vehicle. You can use the carrying bag provided by **efuturo** for this purpose. Place the protective caps fitted at the factory on the charging plugs and then coil up the charging cable without kinks. Now stow it in your vehicle. If you store the charging cable for a relatively long period of time, you should clean it beforehand.

Depending on the contamination and the conditions of use, the charging cable can be cleaned with a dry or damp cloth.



Do not use aggressive cleaning agents

The charging cable must not be disposed of with household waste.

- Please send the defective charging cable back to us. We will handle the professional disposal on your behalf
- If you have any questions, contact your dealer or disposal company
- Dispose of the packaging material in the waste containers for cardboard, paper and plastic